

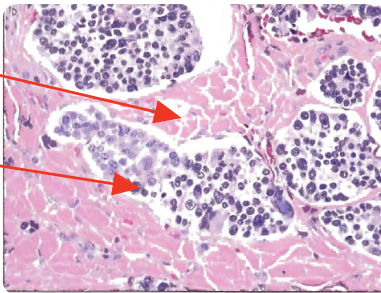
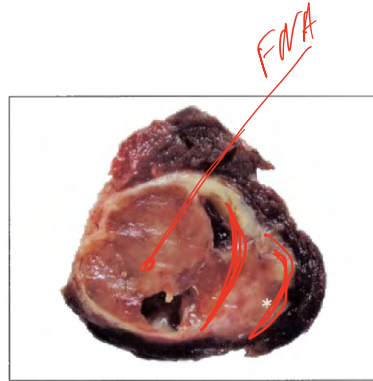
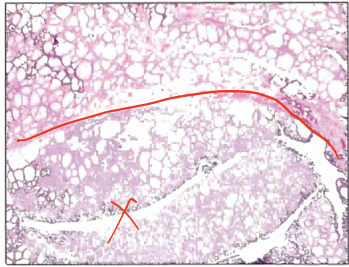
Thyroid neoplasia - distinct, solitary nodule, benign

^{131}I radioactive uptake \downarrow
 Graves/nodular toxic \uparrow adenoma, carcinoma (FNA biopsy)

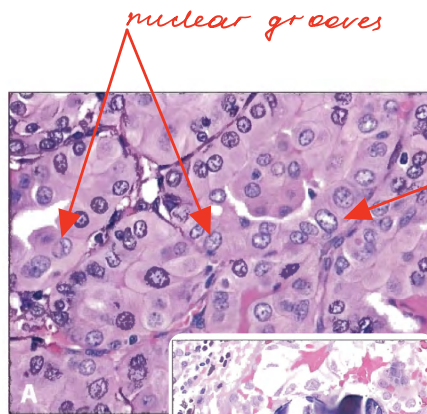
Benign

o Follicular adenoma

benign prolifer. of follicles
 surrounded by a fibrous capsule
 Nonfunctional, sometimes secrete th.h.

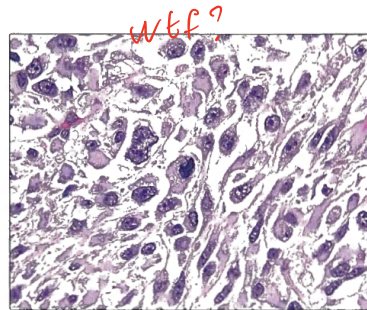


amyloid stroma
 malignant cell

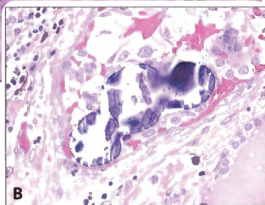


nuclear grooves

empty-appearing nuclei with central clearing - Orphan Annie



wtf?



psammoma body - calcifications

Malignant

o Follicular carcinoma

Malignant prolifer. of follicles
 surrounded by a fibrous capsule with invasion through capsule
 FNA can't distinguish b/w fol. adenoma

↳ Hematogenously metastasis

o Medullary Carcinoma

Malignant prolifer. of parafollicular C cells
 $\uparrow\uparrow$ Calcitonin \rightarrow hypocalcemia
 Calcitonin deposits as amyloid

MendA, 2B; Mutations in RET

o Anaplastic carcinoma

Undifferentiated Elderly

Invas. local structures \rightarrow dysphagia / resp. compromise
 Poor prognosis

o Papillary Carcinoma

80%, exp. to ionizing radiation in childhood - risk factor